

# Language Access Order

Presenters:

Bookda Gheisar, Office of Equity, Diversity, and Inclusion

Tyler Emsky, Commission Office



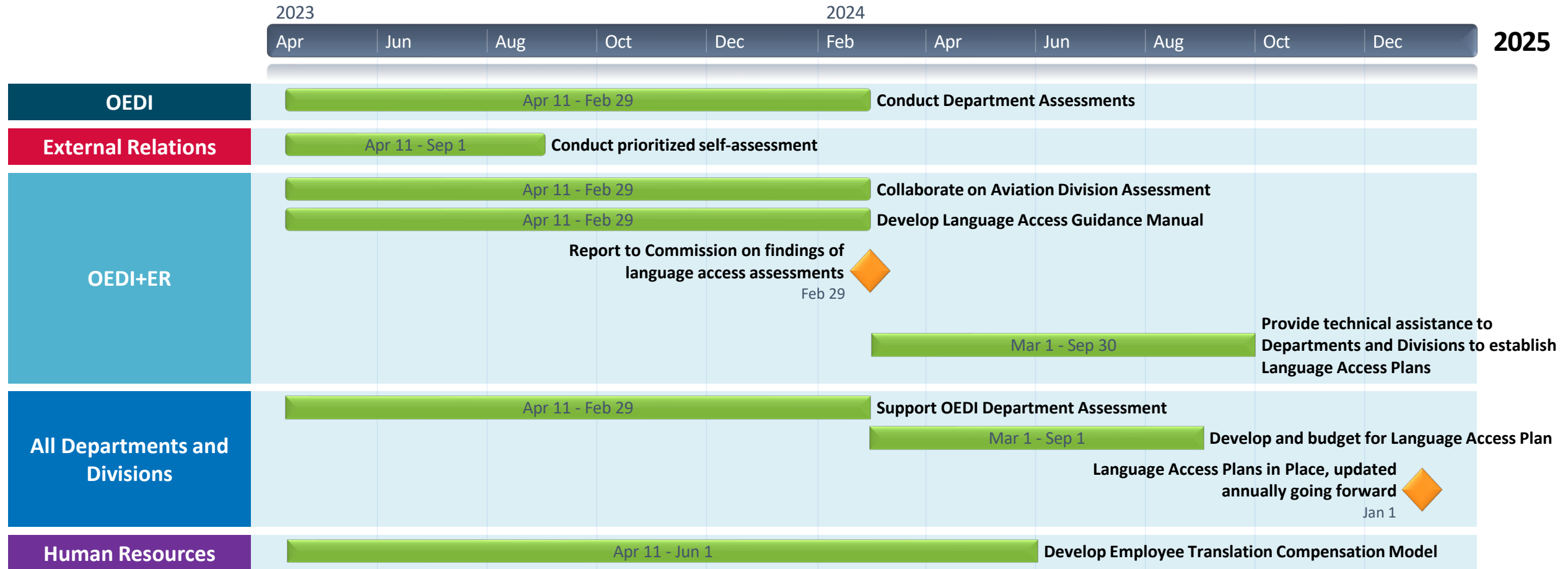
# Highlights of the Language Access Order

- Makes language access a permanent, ongoing commitment by the Port of Seattle in every department and every division.
  - OEDI and ER to develop Language Access Guidance Manual for use by departments in developing their plans.
  - OEDI and ER to assist every department in developing/updating annual Language Access Plans.
  - Departments and divisions shall establish and/or update language access plans on an annual basis starting no later than 2025.

# Highlights (continued)

- Language Access Plans to consider the needs of people who communicate using American Sign Language.
- Per authority granted by Salary and Benefits Resolution, prior to the 2025 budget development process Human Resources will propose a policy and compensation model for Port employees who are tasked with translation services.
- OEDI and ER to report to the Commission and Executive Director by February 2024 on the findings of language access assessments.

# Language Access Order Implementation Timeline



# Thank You

Questions?